



Technology by Apptec

The Best Call-In Dictation System on the Planet!



DigiTel 32-BIT QUICK START GUIDE

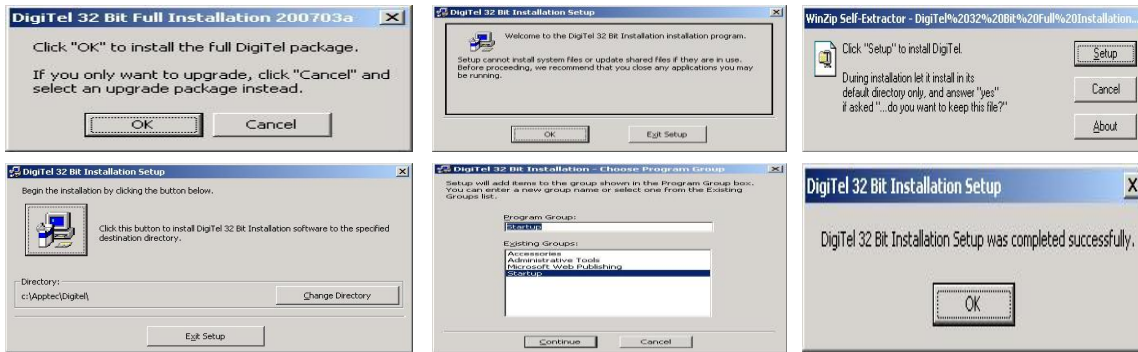
Version 20.07.04

FOR USE WITH 32-BIT WINDOWS
Such as WIN-7 32-BIT, VISTA 32-BIT, XP, SERVER 2003, SERVER 2008 32-BIT, WIN 2000

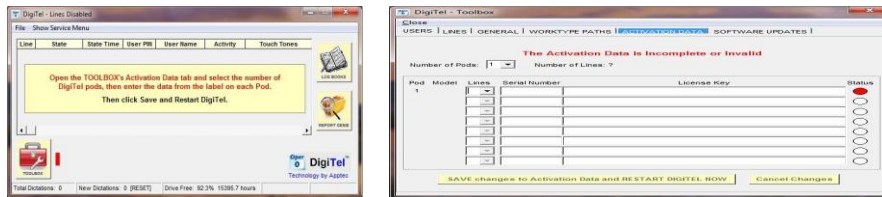
Congratulations on your purchase of DigiTel. The world's best Call-In Dictation System! It's a breeze to install, simple to use, and comes with award winning support! **If you need help or have any questions, please email Support@DigiTelSoftware.com**

Installation & Setup :

1. **Do not** connect the DigiTel Pod to a USB Port yet.
2. On the CD or at "www.DigiTelSoftware.com" run "DigiTel 32-Bit Full Installation". The **DigiTel User Manual** is available on the CD and on the website too.
3. Run the Full Installation Program and then follow the following instructions: click "OK", "OK", "Setup", the "Square PC Picture" (installing in the "c:\Apptec\DigiTel" directory only), "Yes" if asked "do you want to keep this file?", "Continue", and then "OK".



4. **Do not** run the DigiTel program yet. Now connect the DigiTel Pod to your pc's USB Port. If you have more than one Pod, just connect one 4-line Pod at this time.
5. Next, wait for Windows' "Found New Hardware Wizard" to pop up and then follow the instruction on the other side of this guide to install the DigiTel Pod driver → → → → →
6. → **Reboot the pc now.** Once it reboots and DigiTel starts, open its Toolbox and go to the "Activation Data" tab. Enter the Activation Data from the label on the underside of the DigiTel Pod, and click SAVE. DigiTel will then automatically restart and the Pod's green LED will blink... indicating that it is ready for use.
7. Next, from the Toolbox's User tab, select a user, enter a PIN and Name and click SAVE. Repeat this for each user.



8. Now connect your analog phone lines and call into DigiTel. DigiTel will greet each user and talk them through the log-in and dictation process.
9. Please see the enclosed **Getting Started Guide** and the **DigiTel Manual** for **important computer Power Options settings** and recommended pc maintenance, **important Phone Line settings**, and other important information.

→ **DigiTel Pod driver Installation for 32-BIT Windows installations:**

Note: Do not run the DigiTel program yet. If connecting more than one Pod, start with a 4-Line Pod first. At the bottom of this page you will be instructed when to connect additional Pods.

1. When Step 4 of the instructions on the other side of this guide is complete and you have connected the DigiTel Pod to your pc's USB Port, then follow the following instructions:



2. Select **“No, not at this time”**, then click **“Next”**.



3. Select **“Install the software automatically”**, then click **“Next”**, then the following will show:



4. Click **“Continue Anyway”**.



5. Click **“Next”**, then **“Finish”**.



6. In a few seconds, this sequence will repeat a second time to install the second half of the Pod Driver, so follow them again. Then the message **“Your new hardware is installed and ready to use”** will be displayed in the lower right corner of your screen, and the DigiTel Pod's LED will glow green. (If this sequence does not repeat the second time automatically, please **unplug the USB cable and wait for 10 seconds, then plug the USB cable back in and wait for the Found New Hardware Wizard to pop-up again.**)
7. Now you may connect one additional Pod and do this sequence again for each Pod.
8. Then continue with Instruction Step 6 on the other side of this guide → → → → →