



Installation/User Manual

Works great with...



MCKESSON

and much more!

• • • • • • • • • •

Copyright

© Copyright 2005 - 2009
Apptec Corporation
All Rights Reserved

No part of this publication may be reproduced, stored in a retrieval system, or transmitted in any form or by any means, electronic, mechanical, photocopying, recording, or otherwise, without the prior written consent of Apptec Corporation.

Trademarks

Apptec Corporation, the Apptec Corporation logo, and Pedal Magic are trademarks or registered trademarks of Apptec Corporation.

All other trademarks or registered trademarks are the property of their respective companies.

Conventions

Items in **BOLD** and *ITALIC* typeface should be given special attention.

Changes

Apptec Corporation reserves the right to make changes to its products and specifications at any time. Information furnished by Apptec Corporation is believed to be accurate, but no responsibility is assumed by Apptec Corporation for any result from the use of said information.

License Terms And Conditions

GEMINI SYSTEM SOFTWARE is licensed to you under the terms and conditions contained in the END USER LICENSE AGREEMENT located on your system's hard drive at the path "Gemini\PedalMagic\License.rtf". PLEASE READ THIS LICENSE CAREFULLY BEFORE USING THIS SOFTWARE. BY USING THIS SOFTWARE YOU ARE AGREEING TO BE BOUND BY THE TERMS OF THIS LICENSE.

Email Comments to

Info@DigiTelSoftware.com

TABLE OF CONTENTS

- 4 INTRODUCTION
 - 5 INSTALLATION
 - Minimum computer requirements
 - Compatible foot pedals
 - Run setup
 - Create a shortcut to *Pedal Magic*
- UPGRADE
- 6 PRODUCT REGISTRATION
 - 7-8 TOOLBOX
 - Pedal Type
 - Pedal Assignments

INTRODUCTION

Pedal Magic software enables you to control virtually any application program using a foot pedal. It works with the Infinity IN-USB1 and IN-USB2 USB foot pedal or the Infinity IN-DB9 Serial foot pedal, and it sends 'hot key' keystroke sequences to your favorite application program.

Pedal Magic runs in the background and sends your application the keystrokes it needs as each pedal is pressed and released... the keystrokes are sent just as if you typed them from your keyboard... *just like magic!*

The menu functions of most application programs can be activated by pressing the "Alt" key on the keyboard plus a letter key or a function key. A menu function which can be activated in this way is usually denoted by an underscore under one character of its name. For example the menu selection for "File" can be activated by pressing "Alt" plus "F".

Application programs may also allow certain functions to be activated by pressing a combination of 'hot keys'. These applications usually contain a menu with which to configure the combination of keys that activate a particular function. For example a wav player may use the keystroke combination of "Ctrl" plus "Alt" plus "F1" to begin playing a file.

Pedal Magic allows you to instantly recall five pedal definitions saving you time and effort when using your favorite programs. For example, you can use *Pedal Magic* to control your favorite wav player's Play/Pause, Rewind and Fast Forward functions, or you can use it, for example, to instantly Spell Check, Save As, or Print from your favorite word processor... *the possibilities are endless!*

- It can be installed on most Windows based computers and is compatible with Infinity IN-USB1 and Infinity IN-USB2 and Infinity IN-DB9 Serial foot pedals or 100% compatible foot pedals.
- It sends keystrokes to your favorite application at the press of a pedal.
- Instantly switch it to work with up to five different applications.

Pedal Magic runs minimized and automatically remembers the last application you choose. To use it... simply run it and then run your favorite application.

To set it to work with a different application simply click *Pedal Magic* on the task bar and then choose a different application from its menu.

Please note: Your application program must be "in focus" (in other words in the foreground) to receive keystroke sequences from Pedal Magic.

INSTALLATION

Close all open windows and Cold-Boot (turn the power off, wait 5 seconds, then turn the power on) the computer before proceeding.

Minimum computer requirements:

The computer you are installing *Pedal Magic* on will need one USB or serial port.

Compatible Foot Pedals:

The Infinity USB foot pedals (models IN-USB1 and IN-USB2) or the Infinity Serial foot pedal (model IN-DB9) or 100% compatible foot pedals may be used.

Run setup:

On Windows 2000, 2003 Server, XP, and VISTA login as the Administrator or with a user name that has administrator rights and disable any anti-virus software. Then run Setup.exe (on the installation CD or downloaded from www.ApptecVoiceSolutions.com) and click OK, then click the square picture button. *If asked, always choose to “keep” a newer dll file.* After setup is complete click OK and Cold-Boot the computer.

Create a shortcut to *Pedal Magic*:

Place a shortcut on the desktop for the convenience of the user. Create the shortcut to C:\Gemini\PedalMagic\Gemini_Pedal_Magic_Project.exe and then rename it *Pedal Magic*.

Run *Pedal Magic* and configure it:

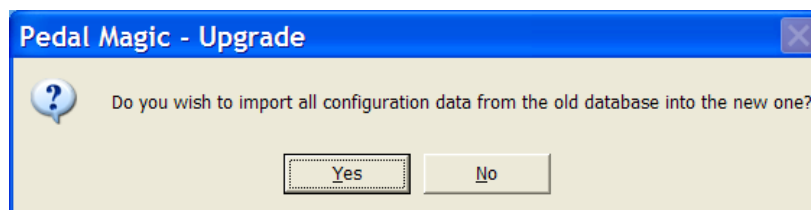
Run *Pedal Magic* by double clicking the *Pedal Magic* shortcut that you created earlier.

UPGRADE

If you want to upgrade to a new version but wish to keep the previous settings, before you install the newer version:

Copy the current database file PedalMagic.mdb from c:\Apptec\PedalMagic\ into c:\Apptec\PedalMagic\PlaceOldDatabaseHere


Then install the new version. The next time you start *Pedal Magic* click “Yes” to the following question:



PRODUCT REGISTRATION

The product runs in evaluation mode until it is registered. In evaluation mode it can be used for up to 30 days.

To register the product enter a License Key for it. To purchase a License Key, contact your *Pedal Magic* reseller. Then to receive your License Key via email, email Keys@DigiTelSoftware.com the “POP Number” shown on your Installation CD or provided to you by the reseller, and the “Lock Number” shown in *Pedal Magic*’s Registration menu. Your License Key will be sent to you via email reply.



The image shows a Windows-style dialog box titled "Pedal Magic - Registration". It has a "Close" button in the top right corner. The main content area contains the following text:

30-day evaluation period remaining

Contact your PedalMagic reseller for information on purchasing a License Key and a compatible Foot Pedal.

Enter License Key Here

Below the text is a large, empty text input field.

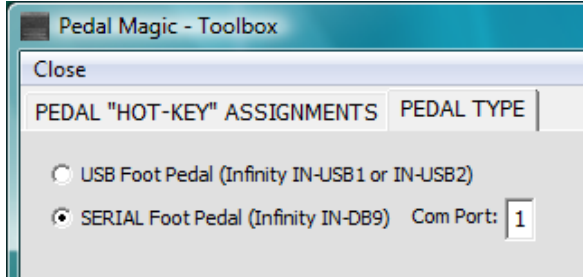
At the bottom left, there is a checkbox labeled "Do not remind me to register".

At the bottom right, there is a label "Lock Number:" followed by a blank space for input.

TOOLBOX

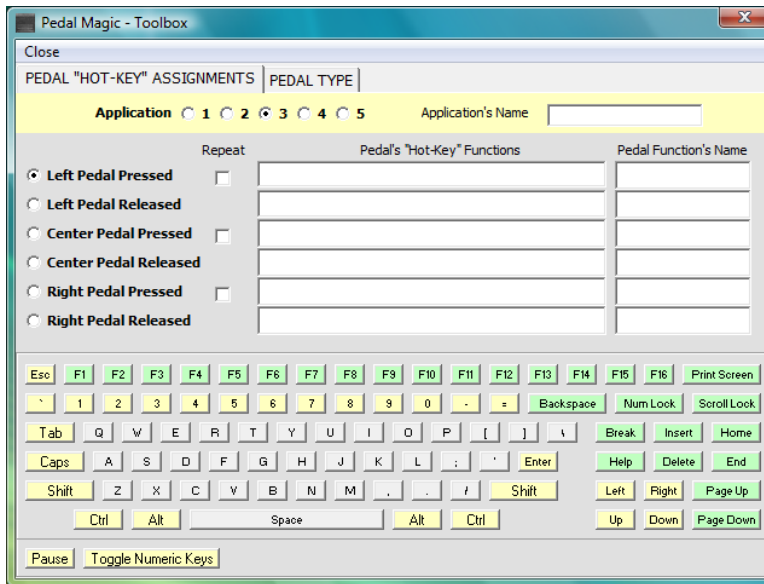
Click **“File”** and then **“Open the Toolbox”** to enter the Toolbox.

Pedal Type



Select the type of pedal you are using, either **“USB”** or **“Serial”**. If you are using a serial foot pedal enter the number of the **“Com”** port it is connected to.

Pedal Assignments



Select one of the five application memories by selecting Application 1, 2, 3, 4 or 5.

Then select one of the six pedal modes,

- Left Pressed or Released
- Center Pressed or Released
- Right Pressed or Released

and enter a **“Hot-Key”** sequence for the selected pedal mode by clicking the desired

combination of keys from the keyboard image shown above. Click **“Pause”** to enter a one-second pause. Click **“Toggle Numeric Keys”** to toggle A-Z to a-z as well as to toggle the numeric dual function keys 0-9 to display their alternate characters. Click **“Repeat”** for a Hot-Key sequence to automatically repeat for as long as that pedal is pressed.

Place the name of the application to be controlled in the **“Application’s Name”** field as a reminder. And place a description of each pedal’s hot-key function in the **“Pedal Functions’ Name”** field as a reminder.

You can clear a Hot-Key Function by double-clicking it.

Happy Pedaling 😊